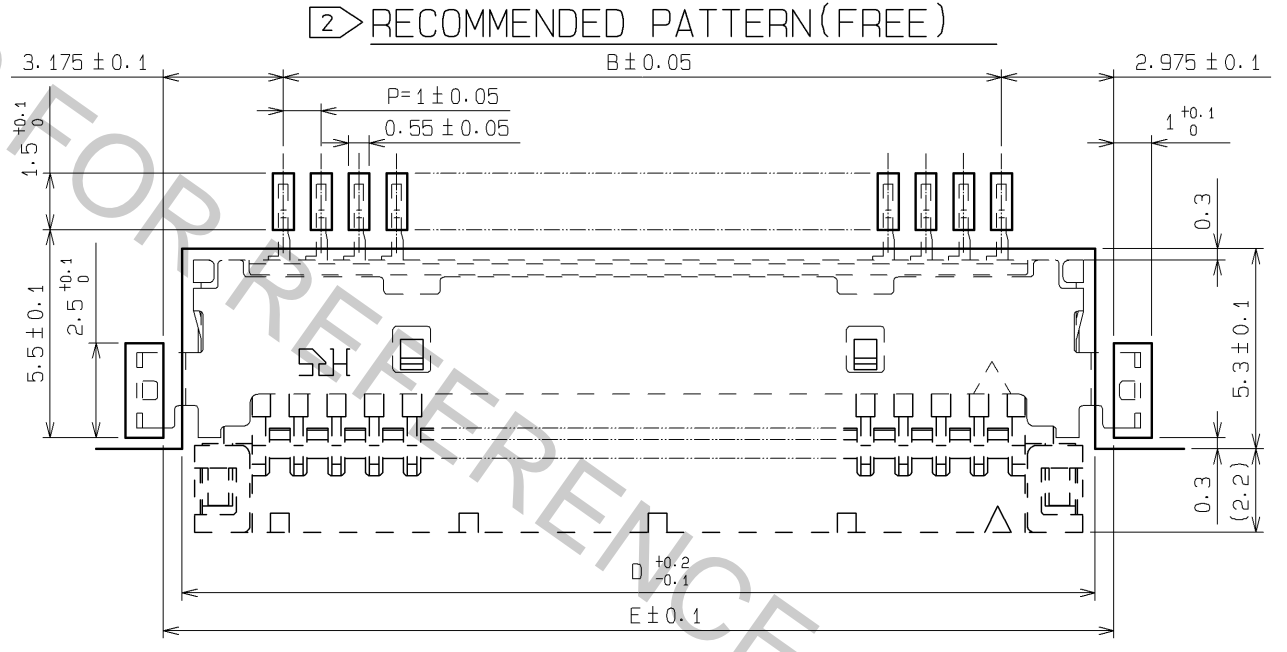
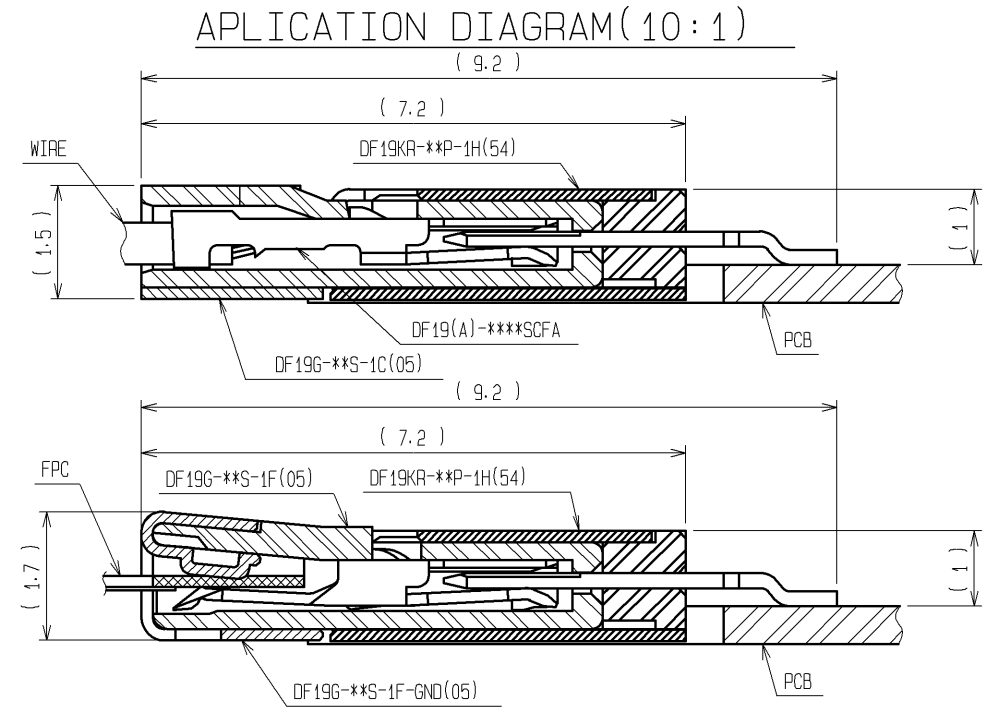
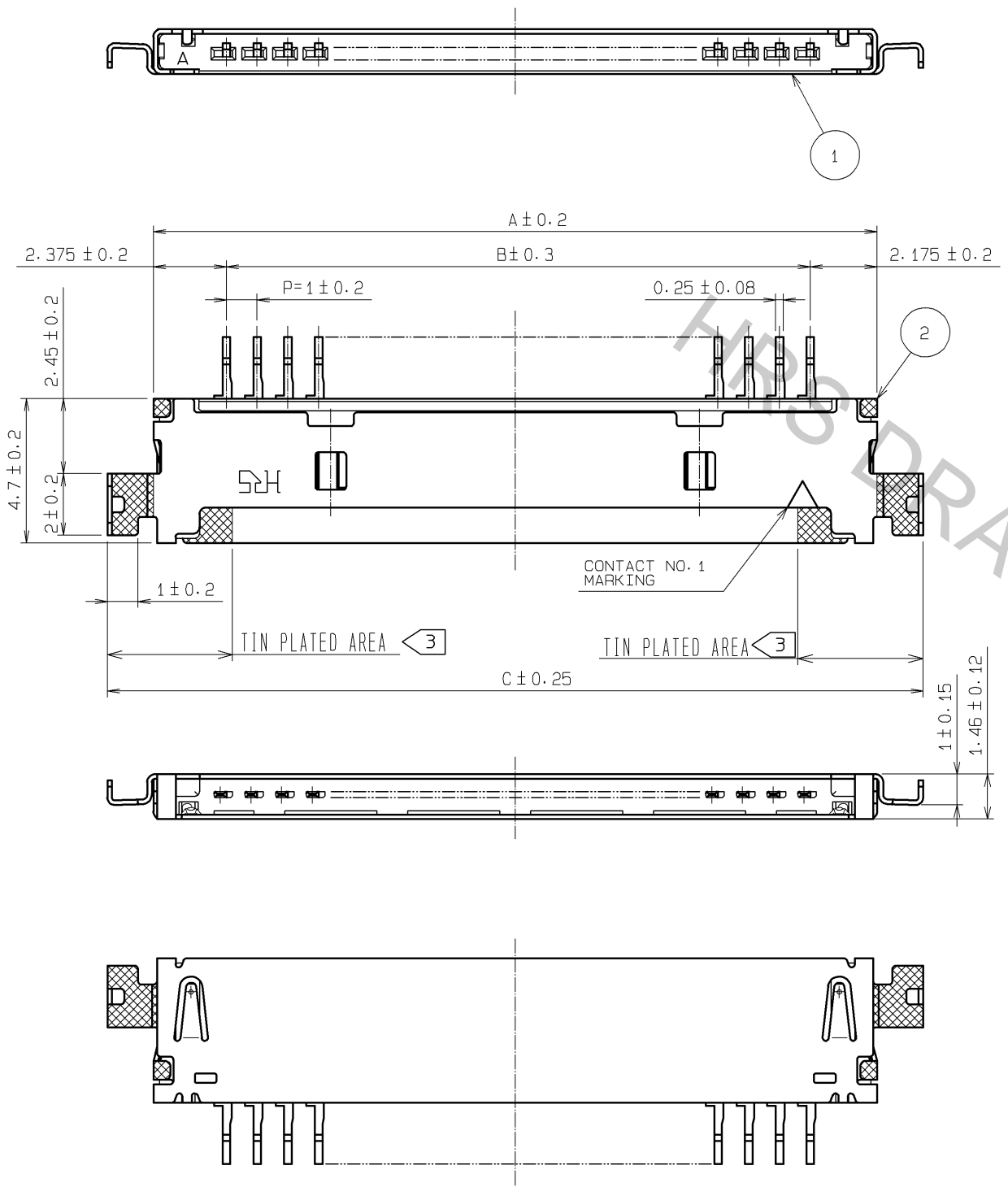


Apr.1.2017 Copyright 2017 HIROSE ELECTRIC CO., LTD. All Rights Reserved.



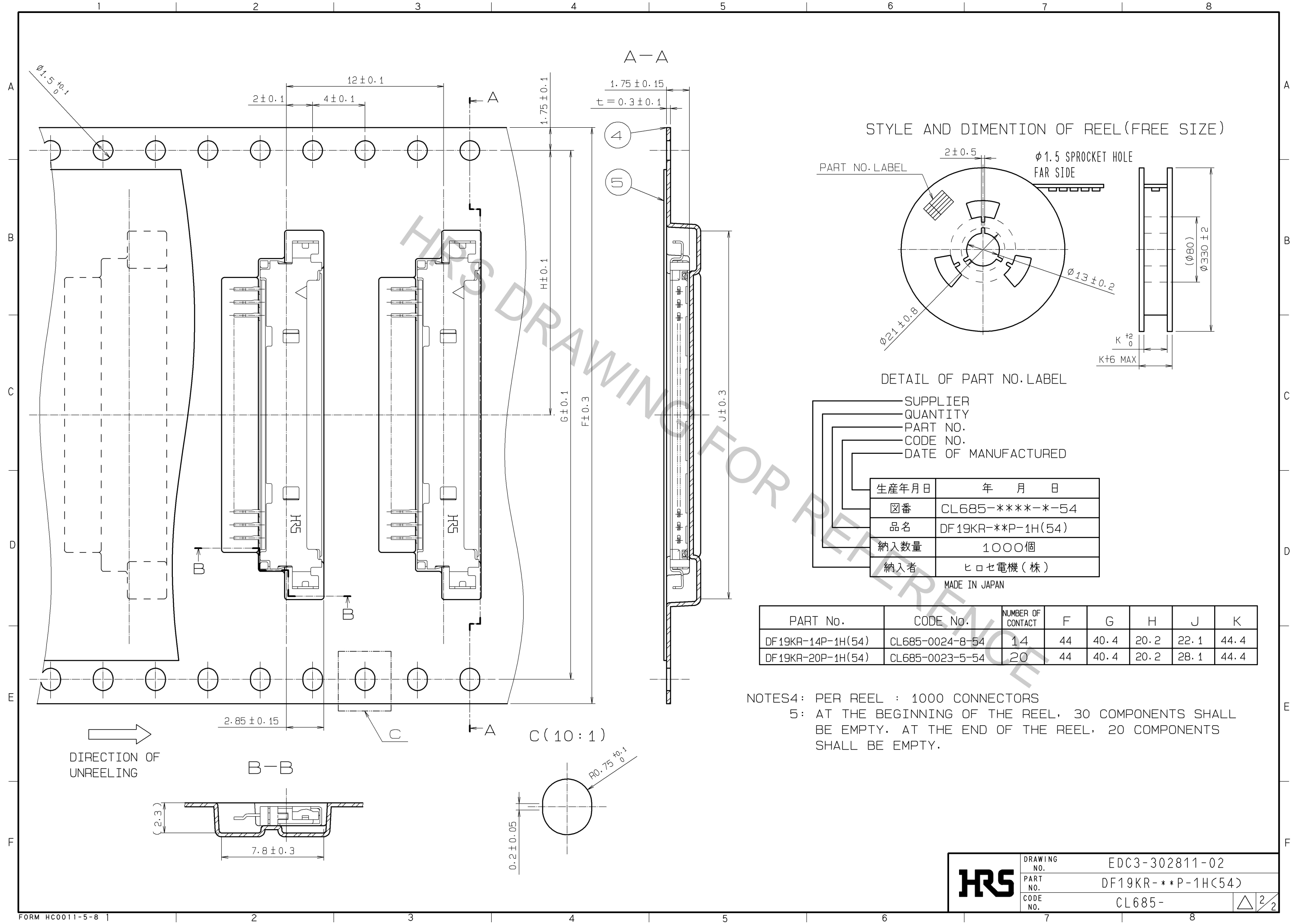
| PART No. | CODE No. | NUMBER OF CONTACT | A | B | C | D | E |
|-------------------|-----------------|-------------------|-------|----|-------|-------|-------|
| DF19KR-14P-1H(54) | CL685-0024-8-54 | 14 | 17.55 | 13 | 20.55 | 18.15 | 19.15 |
| DF19KR-20P-1H(54) | CL685-0023-5-54 | 20 | 23.55 | 19 | 26.55 | 24.15 | 25.15 |

NOTES1: LEAD CO-PLANARITY SHALL BE 0.1 mm MAX.
 2) RECOMMENDED THICKNESS OF CREAM SOLDER PASTE: 0.15mm
 OPEN AREA RATIO: 100%

| NO. | MATERIAL | FINISH, REMARKS | NO. | MATERIAL | FINISH, REMARKS |
|-----|-----------------|---|-----|-----------------|--|
| 2 | PHOSPHER BRONZE | LEAD AREA:TIN PLATED 1#m min UNDER PLATING-NICKEL PLATED 0.5#m min | 3 | PHOSPHER BRONZE | LEAD AREA:TIN-COPPER PLATED 1#m min UNDER PLATING-NICKEL PLATED 1#m min |
| 1 | POLYAMIDE | BLACK, UL94V-0 | 4 | PS | CLEAR, (EMBOSSD CARRIER TAPE) |
| | | | 5 | POLYESTER | CLEAR, (COVER TAPE) |

| UNITS | SCALE | COUNT | DESCRIPTION OF REVISIONS | DESIGNED | CHECKED | DATE |
|-------|-------|-------|--|----------|---------|------|
| mm | 5 : 1 | △ | APPROVED : TS. SAKATA 09.03.02 CHECKED : TS. KUMAZAWA 09.03.02 DESIGNED : SN. KOBAYASHI 09.02.27 DRAWN : SN. KOBAYASHI 09.02.27 | | | |

| DRAWING NO. | PART NO. | CODE NO. |
|----------------|--------------------|----------|
| EDC3-302811-02 | DF19KR-**-P-1H(54) | CL685- |



| | | |
|------------|-------------|-------------------|
| HRS | DRAWING NO. | EDC3-302811-02 |
| | PART NO. | DF19KR-**P-1H(54) |
| | CODE NO. | CL685- |
| | | △ 2/2 |